



Google TV Instructions for Installing and Configuring the Tivimate 8K Pro App

This guide contains 3 sections:

Section 1: Installing Downloader

Section 2: How to Install Tivimate 8K Pro Using Downloader

Section 3: Configuring Tivimate 8K Pro

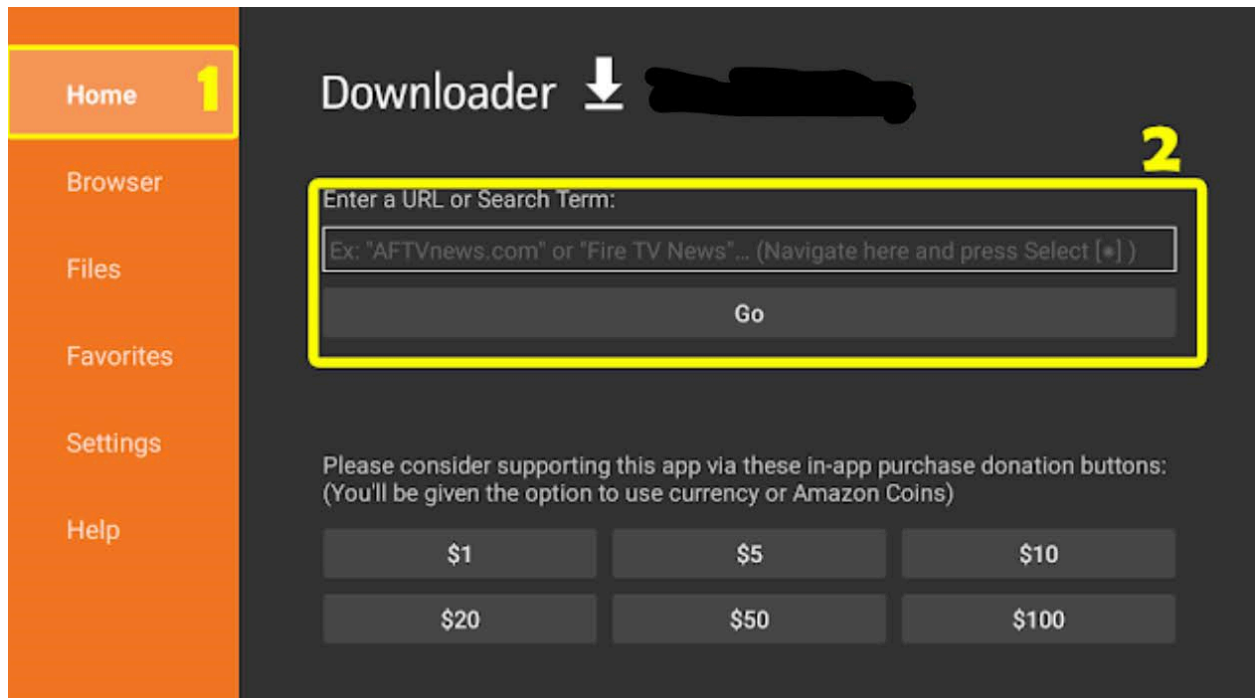
Section 1: Installing Downloader

To download the **Tivimate 8K Pro app**, you must first install **Downloader**. If Downloader is already installed, you may skip this step and go to Section 2.

1. On the Home page, scroll over to **Apps** at the top.
2. In the Search Bar at the top, type in **Downloader**.
3. Select **Downloader** and click **Install**.
4. Once it's installed, select **Open**. *(Upon initial launch of Downloader it should prompt you to allow access to Photos and Media on your device. Make sure you hit Allow, otherwise the app will not work).*

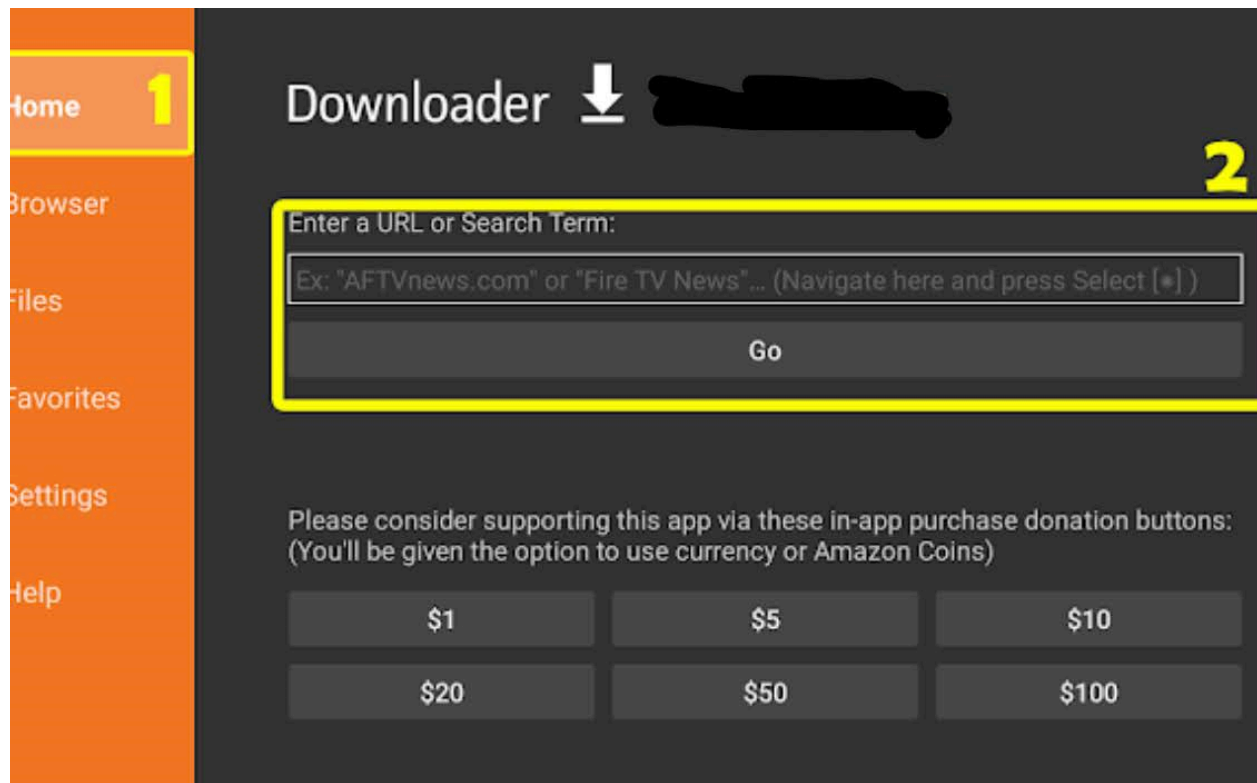
Section 2: How to Install Tivimate 8K Pro Using Downloader

1. Open the Downloader app and highlight the address bar.



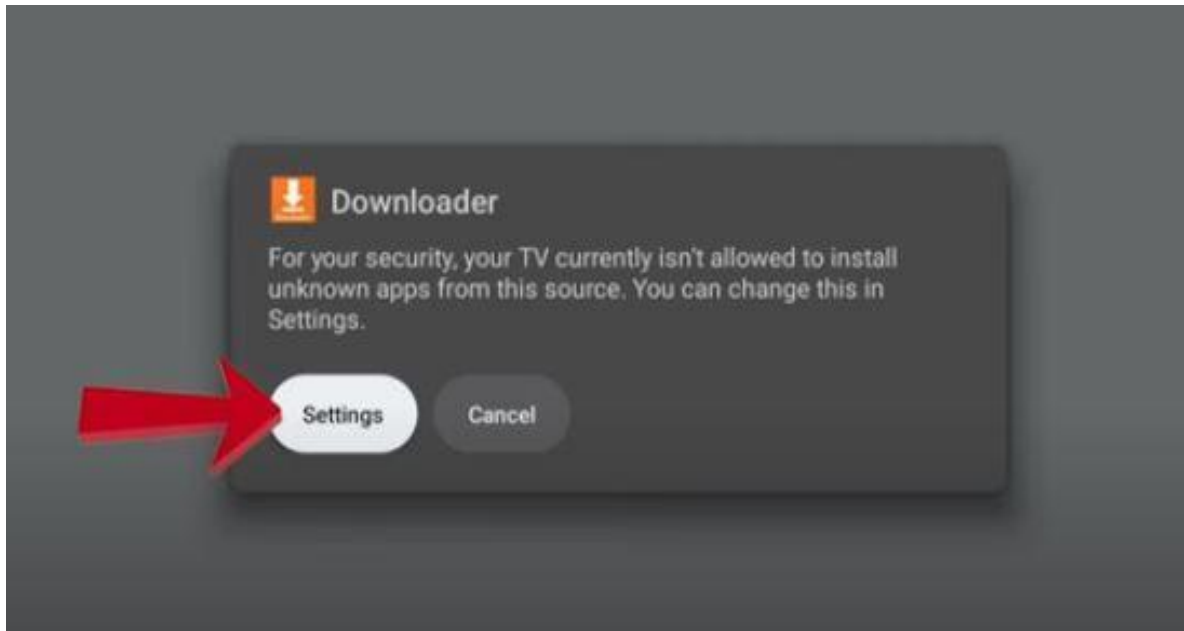


2. **Type** in the following code: **6762447**. Once typed in, click on **GO**. The app should then start installing.



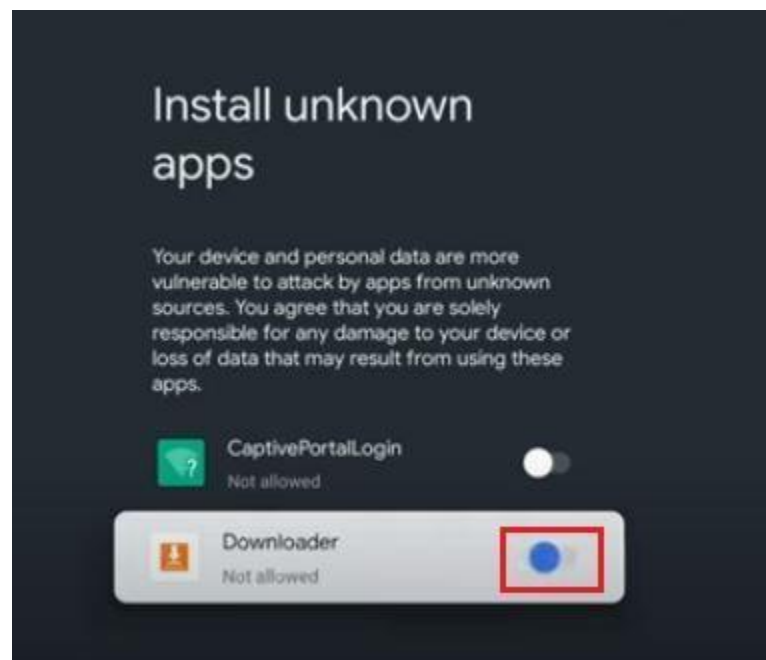


3. During the download you may receive the message below. If you do, be sure to select **Settings** to turn the **Install Unknown Sources** feature..



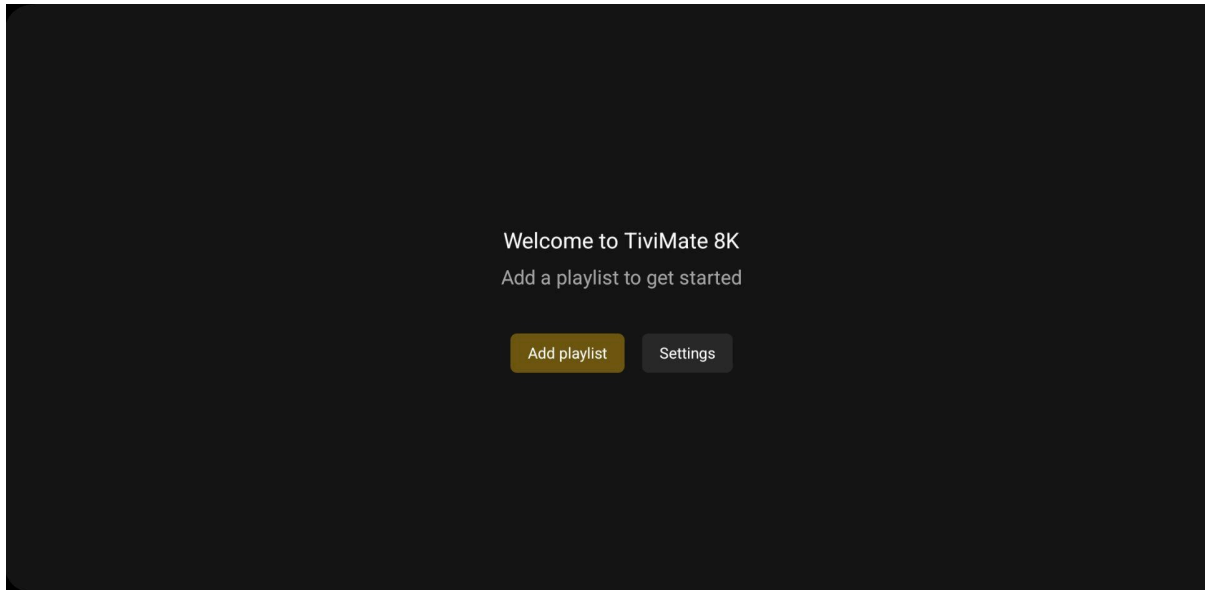


4. Once in Settings, select the **Downloader** option and **toggle on**. You may then resume the download.

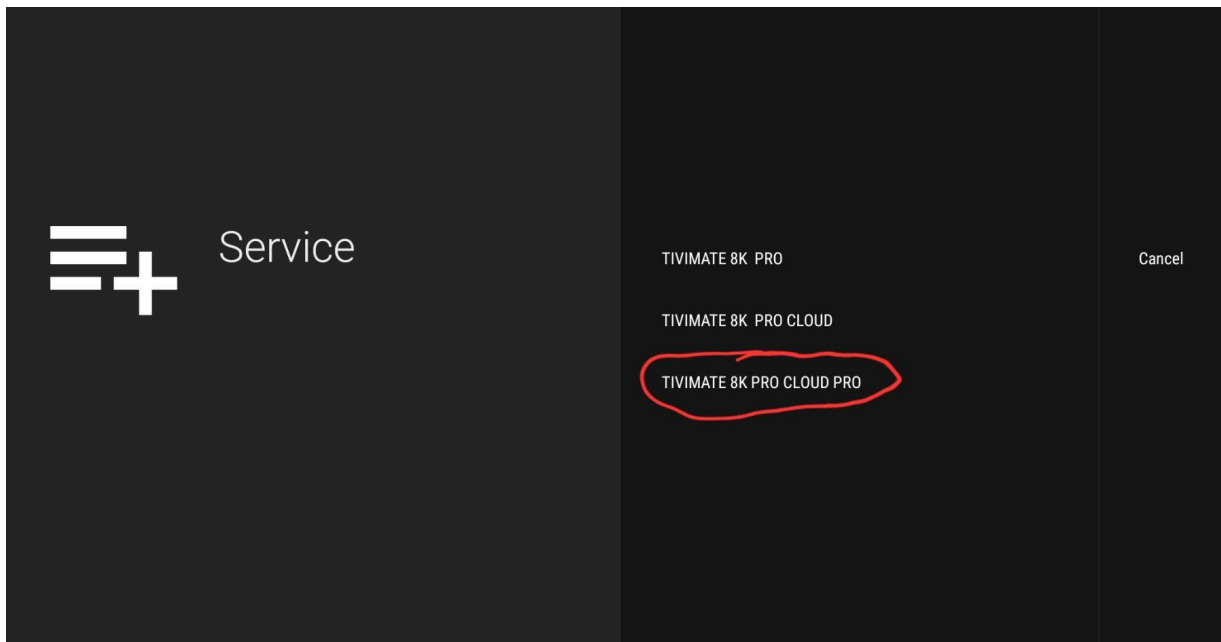


Section 3: Configuring TiviMate 8K Pro

1. Open the TiviMate 8K Pro app. Once launched, select **Add playlist**



2. Select **TiviMate 8K PRO CLOUD PRO**





3. Enter the **Username** and **Password** you received in your Activation email. Ensure **Include TV Channels** and **Include VOD** are checked off. Then hit **Next**.

This is a screenshot of a web application interface with a dark theme. On the left, there is a large white icon of a right-pointing arrow inside a square frame, followed by the text 'Your Login Details'. The main content area on the right contains the following elements: 'Server address' with the value 'TIVIMATE 8K VPN' below it; a red rectangular box highlighting the 'Username' and 'Password' input fields; two checked checkboxes labeled 'Include TV channels' and 'Include VOD'; and a vertical sidebar on the far right with 'Next' and 'Back' buttons.

4. Once the playlist is processed, click on **Done**.

This is a screenshot of the next screen in the web application. On the left, there is a large white icon of a downward-pointing arrow above a horizontal line, followed by the text 'Playlist is processed'. Below this, it lists 'Channels: 8798', 'Movies: 29614', and 'Shows: 7152'. The main content area on the right shows 'Playlist name' with the value 'TIVIMATE 8K VPN' below it. A vertical sidebar on the far right contains a red rectangular box around the 'Done' button and a 'Back' button below it.



5. You are now connected and have full access to all channels, movies, and shows

8K
TiviMate

Search

TV

Movies

Shows

Recordings

My list

Settings

Favorites

All channels

4KJ UHD 3840P

4KJ RELAX UHD 3840P ✱

US| ENTERTAINMENT HD/..

US| SPECTRUM NETWORK


US| TELEMUNDO NETWORK..

US| NEWS HD/4K

US| MOVIES HD/4K

US| PARAMOUNT+ ORIGIN..

US| AMC+ NETWORK RAW



Family Guy
12:02 — 12:30 a.m. 27 min
Lois and Peter are mistaken for young parents by an apartment complex, leaving Meg and Chris home alone.

Fri, Mar 7, 12:03 a.m.

12:00 a.m.

12:30 a.m.

01:00 a.m.

37 US: COMET HD

38 US: COOKING CHANNE..

39 US: COURT TV HD

40 US: COWBOY CHANNEL

41 US: COZI

42 US: CRIME & INVESTIG..

43 US: DAYSTAR HD

44 US: DECADES

The X-Files

Carnival Eats

VPI: Vinnie Politan Investigates

Rodeo Houston

The Nanny

I Killed My BFF

Local Sports Game Rotation

No information

Buffy the

Carnival E

Judgmen

Western S

The Nann

I Killed M

Daybreak

No inform